

4Q Straight Liquidtight Connectors

NEC/CEC — Suitable for use in the following Hazardous Locations:
 Class I, Division 2 per NEC 501.10(B)(4)
 Class I, Zone 2 per NEC 505.15(C)(2)
 Class II, Division 1 per NEC 502.10(A)(2)(2)
 Class II, Division 2 per NEC 502.10(B)(2)

NEC/CEC — Suitable for use in the following Hazardous Locations:
 Class III, Division 1 per NEC 503.10(A)(3)(2)
 Class III, Division 2 per NEC 503.10(B)
 Intrinsically Safe per NEC 504.20

Applications

- To secure, ground and seal liquidtight flexible metal Conduit, Type LFMC, to boxes and enclosures..

Features

- Tapered threaded male hub — NPT
- Compact, slim diameter with small turning radius
- Furnished with locknut and KO sealing ring.
- Liquidtight/Raintight/Oiltight/Concretetight
- UL Listed NEMA Type 4 when installed into a NPT threaded entry or UL Listed conduit hub (sizes 1-1/2" and larger require thread sealant).
- Suitable for grounding through 1-1/4" trade size per NEC Section 250.118(7)
- For trade sizes 1-1/4" and larger, an internal or external equipment bonding conductor is required. See 4Q-L Series with external ground lug.
- Bonding wedge locknuts are recommended in hazardous locations. See 101 Series.
- Suitable for wet locations
- Long ferrule prevents pullout and tight bend conduit "pop-out"
- Reusable ferrule
- Inspection windows in ferrule to ensure full engagement
- See our patented ferrule wrench which makes ferrule installation easy.

Standard Materials

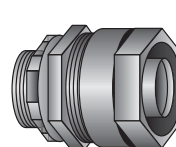
- Malleable iron body and nut
- Steel ferrule

Standard Finishes

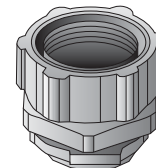
- Zinc electroplated

Options

- Available hot dip/mechanically galvanized.

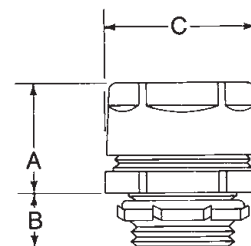


Type 4Q-38 — Type 4Q-200



Type 4Q-250 — Type 4Q-600

Illustrated Dimensions



NEC/CEC Certifications and Compliances

- UL Standard: ANSI/UL 514B
- UL Listed: 11853
- CSA Standard: C22.2 No. 18
- CSA Certified: 009795
- Fed Spec: W-F-406E
- NEMA Standard: FB-1

Trade Size (Inches)	Dimensions in Millimeters (Inches)			Catalog Number	Insulated Throat Catalog Number
	A	B	C		
3/8 (1/2 KO)	25.40 (1.00)	12.70 (0.50)	28.70 (1.13)	4Q-38	4Q-38T
1/2	25.40 (1.00)	12.70 (0.50)	31.75 (1.25)	4Q-50	4Q-50T
3/4	28.70 (1.13)	12.70 (0.50)	38.10 (1.50)	4Q-75	4Q-75T
1	31.75 (1.25)	16.00 (0.63)	44.45 (1.75)	4Q-100	4Q-100T
1-1/4	35.05 (1.38)	16.00 (0.63)	63.50 (2.50)	4Q-125	4Q-125T
1-1/2	35.05 (1.38)	16.00 (0.63)	69.85 (2.75)	4Q-150	4Q-150T
2	38.10 (1.50)	16.00 (0.63)	82.55 (3.25)	4Q-200	4Q-200T
2-1/2	50.80 (2.00)	25.40 (1.00)	104.90 (4.13)	4Q-250	4Q-250T
3	50.80 (2.00)	28.70 (1.13)	123.95 (4.88)	4Q-300	4Q-300T
3-1/2	57.15 (2.25)	31.75 (1.25)	123.95 (4.88)	4Q-350	4Q-350T
4	57.15 (2.25)	31.75 (1.25)	155.70 (6.13)	4Q-400	4Q-400T
5	60.45 (2.38)	28.70 (1.13)	187.45 (7.38)	4Q-500 ①	4Q-500T ①
6	63.50 (2.50)	35.05 (1.38)	219.20 (8.63)	4Q-600 ①②	4Q-600T ①②

① UL Listing not applicable.

② CSA Certification not applicable.

4Q Straight Liquidtight Connectors

Hot-Dip/Mechanically Galvanized with Insulated Throat

NEC/CEC — Suitable for use in the following

Hazardous Locations:

Class I, Division 2 per NEC 501.10(B)(4)

Class I, Zone 2 per NEC 505.15(C)(2)

Class II, Division 1 per NEC 502.10(A)(2)(2)

Class II, Division 2 per NEC 502.10(B)(2)

NEC/CEC — Suitable for use in the following

Hazardous Locations:

Class III, Division 1 per NEC 503.10(A)(3)(2)

Class III, Division 2 per NEC 503.10(B)

Intrinsically Safe per NEC 504.20

Applications

- To secure, ground and seal Liquidtight Flexible Metal conduit, Type LFMC, to boxes and enclosures.

Features

- Tapered threaded male hub NPT.
- Compact, slim diameter with small turning radius.
- Furnished with locknut and KO sealing ring.
- Liquidtight/Raintight/Oiltight/Concretetight
- UL Listed NEMA Type 4 when installed into a NPT threaded entry or UL Listed conduit hub (sizes 1-1/4" and larger require thread sealant).
- Suitable for grounding through 1-1/4" trade size per NEC Section 250.118(7)
- For trade sizes 1-1/2" and larger, an internal or external equipment bonding conductor is required.
- Bonding wedge locknuts are recommended in hazardous locations. See 101 Series.
- Suitable for wet locations.
- Long ferrule prevents pullout and tight bend conduit "pop-out".
- Inspection windows in ferrule to ensure full engagement.
- Provided with insulated throat.

Standard Materials

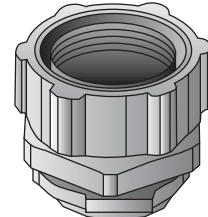
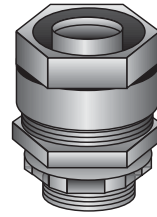
- Malleable iron: body and nut
- Steel ferrule

Standard Finishes

- Malleable iron - galvanized
- Steel ferrule - zinc electroplated

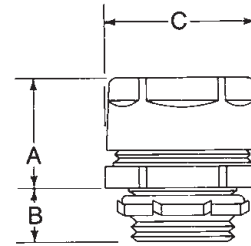
NEC/CEC Certifications and Compliances

- UL Standard: ANSI/UL 514B
- UL Listed: 11853
- CSA Standard: C22.2 No. 18
- CSA Certified: 9795
- Fed Spec: W-F-406E
- NEMA Standard: FB-1



Type 4Q-38TG — Type 4Q-200TG Type 4Q-250TG — Type 4Q-600TG

Illustrated Dimensions



COMMERCIAL AND INDUSTRIAL FITTINGS: LIQUIDTIGHT CONDUIT FITTINGS

OZGEDNEY

Trade Size (Inches)	Dimensions in Millimeters (Inches)			Catalog Number
	A	B	C	
3/8 (1/2 KO)	25.40 (1.00)	12.70 (0.50)	28.70 (1.13)	4Q-38TG
1/2	25.40 (1.00)	12.70 (0.50)	31.75 (1.25)	4Q-50TG
3/4	28.70 (1.13)	12.70 (0.50)	38.10 (1.50)	4Q-75TG
1	31.75 (1.25)	16.00 (0.63)	44.45 (1.75)	4Q-100TG
1-1/4	35.05 (1.38)	16.00 (0.63)	63.50 (2.50)	4Q-125TG
1-1/2	35.05 (1.38)	16.00 (0.63)	69.85 (2.75)	4Q-150TG
2	38.10 (1.50)	16.00 (0.63)	82.55 (3.25)	4Q-200TG
2-1/2	50.80 (2.00)	25.40 (1.00)	104.90 (4.13)	4Q-250TG
3	50.80 (2.00)	28.70 (1.13)	123.95 (4.88)	4Q-300TG
3-1/2	57.15 (2.25)	31.75 (1.25)	123.95 (4.88)	4Q-350TG
4	57.15 (2.25)	31.75 (1.25)	155.70 (6.13)	4Q-400TG
5	60.45 (2.38)	28.70 (1.13)	187.45 (7.38)	4Q-500TG ①
6	63.50 (2.50)	35.05 (1.38)	219.20 (8.63)	4Q-600TG ①②

① UL Listing not applicable.

② CSA Certification not applicable.